

FREEHOLD



House - Semi-Detached

# LARGE 3 BEDROOM FAMILY HOME IN NEED OF UPDATING

Offers In Excess Of

## £700,000

### FEATURES

- Fabulous sought after location on Gibbs Green
- Large driveway with garage at side
- 2 reception rooms
- Spacious eat-in kitchen/breakfast room
- Guest W.C.



**SPACE**  
RESIDENTIAL

# 3 Bedroom House - Semi-Detached located in Edgware

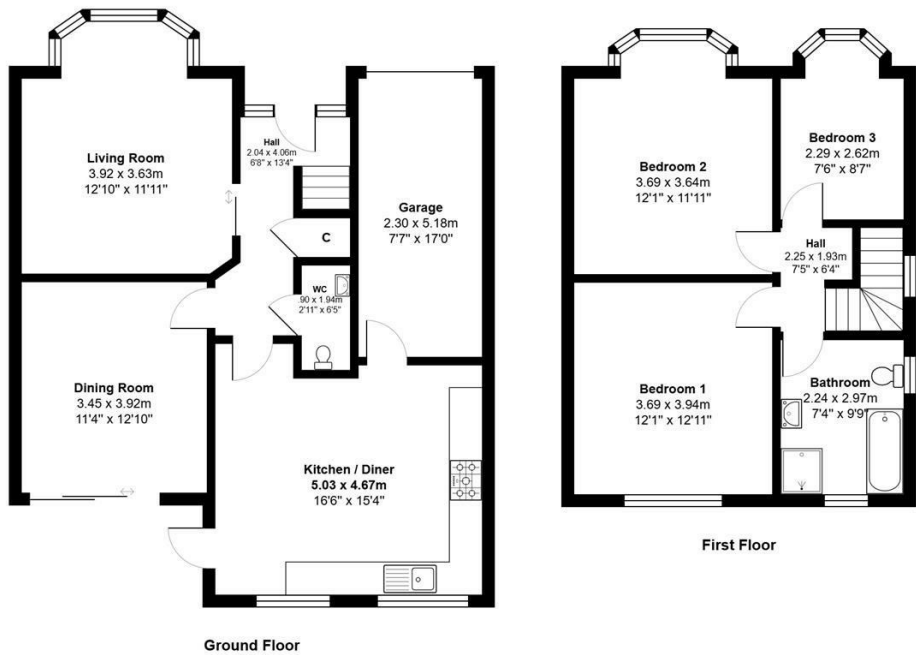
Space Residential are proud to bring to market this fabulous family home located on Gibbs Green, a much sought Road just off Hale Lane.

This delightful semi-detached house, built in the 1920s, offers a perfect blend of character and modern living, with three well-proportioned bedrooms, and two inviting reception rooms providing ample opportunity for relaxation and entertaining, making it a wonderful home for gatherings with friends and family.

Offered for sale CHAIN FREE and in need of complete renovation throughout the marketing price reflects the value and potential this home offers.

There is huge potential to extend at the rear, side and into the loft space adding further value to this house, subject to obtaining the usual planning consents.

Please contact sole agents Space Residential to arrange a viewing on 0208 906 2222.



Total Area: 125.9 m² ... 1355 ft²

All measurements are approximate and for display purposes only

Call us on

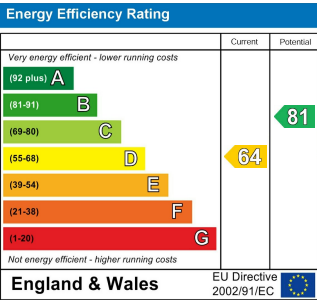
0208 906 2222

info@spaceresidential.com

spaceresidential.com

Council Tax Band

F



Agents Note: Whilst every care has been taken to prepare these particulars, they are for guidance purposes only. All measurements are approximate and are for general guidance purposes only and whilst every care has been taken to ensure their accuracy, they should not be relied upon and potential buyers are advised to recheck the measurements.

